



Lime Down

Solar Park

Environmental Statement

Volume 3, Appendix 12-7: Historic Landscape Character Assessment

September 2025

Revision 1

Planning Inspectorate Reference: EN010168

Document Reference: APP/6.3

APFP Regulation 5(2)(a)



List of Contents

1	Introduction	1
2	Policy and Guidance	2
2.2	Legislation	2
2.3	Historic England Guidance	2
2.4	National Policy Statements.....	2
2.5	Local Policy	5
2.6	Chartered Institute for Archaeologists (CIfA) Guidance	5
3	Methodology	6
3.2	Site Visits.....	7
4	Baseline Information	8
4.2	Solar PV Sites	8
4.3	Cable Route Corridor and Highway Improvement Areas	11
5	Assessment of Significance	17
6	Impact Assessment	18
6.1	The Scheme	18
6.2	Potential Impacts to Historic Landscape Character	18
7	Conclusion	19
8	References.....	20
	Figures	21
	Annex A Plates	22

List of Tables

Table 1: Information Sources.....	7
Table 2: Gazetteer of HLC units within Lime Down A	8
Table 3: Gazetteer of HLC Units within Lime Down B.	9
Table 4: Gazetteer of HLC units within Lime Down C.....	9
Table 5: Gazetteer of HLC units within Lime Down D.....	10
Table 6: Gazetteer of HLC units within Lime Down E.....	10
Table 7: Gazetteer of HLC units within the Lime Down Cable Route Corridor and Highway Improvement Areas	12

List of Plates (Annex A)

- Plate 1. HWI3165 on Site A
Plate 2. HWI3166 on Site A

Plate 3. HWI3167 on Site A
Plate 4. HWI3169 on Site A
Plate 5. HWI3182 on Site A
Plate 6. HWI3294 on Site B
Plate 7. HWI4108 on Site B
Plate 8. HWI4109 on Site B
Plate 9. HWI4111 on Site B
Plate 10. HWI3206 on Site C
Plate 11. HWI3207 on Site C
Plate 12. HWI3209 on Site C
Plate 13. HWI3262 on Site C
Plate 14. HWI3263 on Site C
Plate 15. HWI3271 on Site C
Plate 16. HWI3295 on Site C
Plate 17. HWI3290 on Site D
Plate 18. HWI3324 on Site D
Plate 19. HWI3326 on Site D
Plate 20. HWI3333 on Site D
Plate 21. HWI3334 on Site D
Plate 22. HWI3575 on Site D
Plate 23. HWI3337 on Site E
Plate 24. HWI3340 on Site E
Plate 25. HWI3350 on Site E
Plate 26. HWI3352 on Site E
Plate 27. HWI3353 on Site E
Plate 28. HWI3354 on Site E
Plate 29. HWI3355 on Site E
Plate 30. HWI4396 on Site E
Plate 31. HWI4397 on Site E

List of Figures

Figure 12-3: Historic Landscape Character
Figure 12-3-1: Historic Landscape Character: Lime Down A and Cable Route
Figure 12-3-2: Historic Landscape Character: Lime Down B and Cable Route
Figure 12-3-3: Historic Landscape Character: Lime Down C and Cable Route
Figure 12-3-4: Historic Landscape Character: Lime Down D and Cable Route
Figure 12-3-5: Historic Landscape Character: Lime Down E and Cable Route
Figure 12-3-6: Historic Landscape Character: Lime Down Cable Route Corridor
Figure 12-3-7: Historic Landscape Character: Lime Down Cable Route Corridor
Figure 12-3-8: Historic Landscape Character: Lime Down Cable Route Corridor
Figure 12-3-9: Historic Landscape Character: Lime Down Cable Route Corridor
Figure 12-3-10: Historic Landscape Character: Lime Down Cable Route Corridor

1 Introduction

- 1.1.1 This Historic Landscape Character (HLC) assessment report has been prepared to support the Development Consent Order (DCO) application for the Lime Down Solar Park (hereafter referred to as ‘the Scheme’). The Order Limits for the Scheme are located within the administrative boundary of Wiltshire Council with small areas of existing highway within the administrative area of South Gloucestershire Council. This assessment addresses the information requirements set out in the National Policy Statements (NPSs) (Ref 6, Ref 7, Ref 8) and provides the proportionate response sought by the National Planning Policy Framework (Ref 9).
- 1.1.2 This document provides an assessment of the impact that could be caused by the Scheme to the historic landscape, comprising HLC units as defined by the Wiltshire and Swindon Historic Landscape Characterisation (WSHLC) (Ref 11).
- 1.1.3 The assessment has been undertaken to meet the requirements of the National Planning Policy Framework’s Section 16: ‘Conserving and enhancing the historic environment’ and NPSs *Overarching National Policy Statement for Energy* EN-1 (Ref 6), *National Policy Statement for Renewable Energy Infrastructure* EN-3 (Ref 7), and *National Policy Statement for Electricity Networks Infrastructure* EN-5 (Ref 8).
- 1.1.4 This document forms Appendix 12.7 of **ES Volume 1, Chapter 12: Cultural Heritage [EN010168/APP/6.1]**.

2 Policy and Guidance

- 2.1.1 In considering any DCO application for the Scheme, the Secretary of State will be guided by current legislation and the policy framework set by government planning policy and by other material considerations.

2.2 Legislation

- 2.2.1 The Planning Act 2008 (Ref 12) sets out the process for the consenting of NSIPs and the basis for the decision whether to grant development consent.
- 2.2.2 The applicable legislative framework for this archaeological desk-based assessment relates to the Ancient Monuments and Archaeological Areas Act (AMAAA) 1979 (Ref 1).

2.3 Historic England Guidance

- 2.3.1 The guidance provided by Historic England in *Historic Landscape Characterisation: A Tool for Understanding and Managing Whole Areas* (Ref 5) discusses the nature of HLC, rather than how to assess impact to it. It states that “HLC does not attach an expert’s ascription of significance or value, recognising that these are not immutable.”. It goes on to state that: “Characterisation recognises that landscape is and always has been dynamic and that society and its decision makers are most often involved in the careful management of change rather than preservation in the face of it.”

2.4 National Policy Statements

NPS (EN-1)

- 2.4.1 NPS EN-1 is the overarching policy statement for energy. It considers the provision of and the potential impacts which arise from the development of all types of energy infrastructure.
- 2.4.2 Section 5.9 of NPS EN-1 considers the potential impacts on the historic environment. Paragraph 22 of this section states: “In determining applications, the Secretary of State should seek to identify and assess the particular significance of any heritage asset that may be affected by the proposed development, including by development affecting the setting of a heritage asset (including assets whose setting may be affected by the proposed development), taking account of.... historic landscape character records.” This coupled with paragraph 9 highlights the importance of considering the potential impacts of schemes on HLC, in order to better understand impacts on the wider setting of heritage assets. Paragraph 9 states: “The applicant should undertake an assessment of any likely significant heritage impacts of the proposed development as part of the

EIA Consideration will also need to be given to the possible impacts, including cumulative, on the wider historic environment. The assessment should include reference to any historic landscape or seascape character assessment and associated studies as a means of assessing impacts relevant to the proposed project” (Ref 6).

NPS (EN-3)

- 2.4.3 NPS EN-3 is the National Policy Statement which considers provision for the development of renewable energy infrastructure.
- 2.4.4 Section 2.5 of NPS EN-3 considers how to ensure good design of energy infrastructure. Paragraph 2 of this section states that: *“Proposals for renewable energy infrastructure should demonstrate good design, particularly in respect of landscape and visual amenity, opportunities for co-existence/co-location with other marine and terrestrial uses, and in the design of the project to mitigate impacts such as noise and effects on ecology and heritage”* (Ref 7).
- 2.4.5 Section 2.10 of NPS EN-3 specifically considers solar photovoltaic generation. Paragraph 108 of this section refers to potential impacts of solar panels which *“may include the effects on the setting of Listed Buildings and other designated heritage assets as well as on Historic Landscape Character”* (Ref 7). This paragraph provides some insight into how HLC should be considered, setting it aside from heritage assets as a stand-alone concept which may inform effects on the setting of heritage assets.

NPS (EN-5)

- 2.4.6 The adopted National Policy Statement for Electricity Networks Infrastructure (EN-5) (Ref 8) does not contain any policies pertaining to the impacts of solar energy production on the cultural heritage resource but does make reference to heritage or archaeology on two occasions, both with regard to the laying of below ground electricity cables. In paragraph 2.9.23, the NPS discusses cases that arise where there may be: *“... a high potential for widespread and significant adverse landscape and/or visual impacts along certain sections of its route may result in recommendations to use undergrounding for relevant segments of the line or alternatively consideration of using a route including subsea cabling.”*
- 2.4.7 In paragraph 2.9.25, the NPS states: *“In such cases the Secretary of State should only grant development consent for underground or subsea sections of a proposed line over an overhead alternative if they are satisfied that the benefits accruing from the former proposal clearly outweigh any extra economic, social, or environmental impacts that it presents, the mitigation hierarchy has been followed, and that any*

technical obstacles associated with it are surmountable. In this context it should consider:

- the landscape and visual baseline characteristics of the setting of the proposed route, in particular, the impact on high sensitivity visual receptors (as defined in the current edition of the Landscape Institute's Guidelines for Landscape and Visual Impact Assessment), residential areas, designated landscapes, valued landscapes, designated heritage assets and Heritage Coasts (including, where relevant, impacts on the setting of designated features and areas), noting the policy in EN-1 section 5.4.53 on regional and local designations
- the potentially very disruptive effects of undergrounding on local communities, habitats, archaeological and heritage assets, marine environments, soil (including peat soils), hydrology, geology, and, for a substantial time after construction, landscape and visual amenity. (Undergrounding an overhead line will mean digging a trench along the length of the route, and so such works will often be disruptive – albeit temporarily – to the receptors listed above than would an overhead line of equivalent rating)."

2.4.8 The NPSs listed above came into effect on 17 January 2024. These NPSs set out the Government's energy policy for the delivery of nationally significant energy infrastructure, the need for new energy infrastructure, and guidance for the determination of an application for a Development Consent Order.

National Planning Policy Framework (NPPF 2024)

2.4.9 As already established above with reference to the relevant National Policy Statements, HLC units are not considered to be heritage assets in their own right and are not specifically discussed in Section 16 of the NPPF which covers the policy regarding the historic environment. However, other sections of the NPPF do discuss the importance of developments being sympathetic with the local character, for instance, paragraph 135c which states *"Planning policies and decisions should ensure that developments... are sympathetic to local character and history, including the surrounding built environment and landscape setting, while not preventing or discouraging appropriate innovation or change (such as increased densities)"* (Ref 9). This engrains the need to understand the local character of an area when proposing development.

Planning Practice Guidance

2.4.10 The Planning Practice Guidance (Ref 10) is a web-based resource which is to be used in conjunction with the NPPF. It is aimed at planning professionals and prescribes best practice within the planning sector. The

relevant section is entitled ‘Conserving and enhancing the historic environment’. The guidance given in this section sets out the best practice to applying government policy in the NPPF. It provides an interpretation for each of the interests assigned to heritage assets in understanding significance: archaeological, architectural and artistic, and historic (Paragraph: 006 Reference ID: 18a-006-20190723).

2.5 Local Policy

Wiltshire Core Strategy

- 2.5.1 The current Local Plan for Wiltshire is the *Wiltshire Core Strategy (WCS)* (Ref 13) The WCS was adopted in January 2015 and provides the strategic planning policies for the future development of the area from 2015 to 2026. The Wiltshire Local Plan is currently being updated to guide development up to 2038 and was submitted for independent examination on 28 November 2024. The policy relating to the historic environment comprises:
- 2.5.2 Core Policy 58 of the Wiltshire Core Strategy lays out the policy on landscape character. The policy states that: *“Development should protect, conserve and where possible enhance landscape character, while any negative impacts must be mitigated as far as possible through sensitive design and landscape measures.”* It goes on to say that *“proposals will need to demonstrate that the following aspects of landscape character have been conserved and where possible enhanced through sensitive design, landscape mitigation and enhancement measures: v. Landscape features of cultural, historic and heritage value.”* The policy also states that design and mitigation measures should be influenced by the relevant landscape character assessments, e.g. Historic Landscape Characterisation.

2.6 Chartered Institute for Archaeologists (CIfA) Guidance

- 2.6.1 CIfA’s guidance does not cover HLC in depth, however, their Standard and guidance for historic environment desk-based assessment (Ref 2) states in paragraph 3.5.3: *“Reports should contain as a minimum.... a description of the area’s historic character and the effect of proposed development upon it (where appropriate, this should include options for conserving or enhancing local character)”* (Ref 2).

3 Methodology

- 3.1.1 The purpose of this HLC assessment is to meet the requirements of NPS EN-1, NPS EN-3, the NPPF and any local plans in order to inform planning decisions when considering proposals that have the potential to have an impact, directly or indirectly, upon HLC. It is not concerned with other planning issues.
- 3.1.2 The assessment of the potential impacts to the HLC has been based on HLC units defined by the Wiltshire and Swindon Historic Landscape Characterisation (WSHLC) (Ref 11). This document provides a broad overarching type and a primary type for each HLC unit.
- 3.1.3 The degree of impact to HLC through development is variable and can sometimes be positive rather than negative. The wide range of potential impacts include change of land use, change in nature and shape of field boundaries, change in access to the landscape and changes in sensory appreciation of the landscape.
- 3.1.4 Under the requirements of national and local policy and in line with the relevant professional guidance, the process of undertaking a HLC impact assessment is:
- Understanding the factors which contribute to the character of the HLC unit in order to understand its historic value;
 - Understanding the nature of the proposed development in order to understand the potential impact to this historic value; and
 - To assess the impact of the proposed development on HLC units
- 3.1.5 For the purposes of this report, HLC units are not considered to be heritage assets in their own right, as is established above from the relevant policy and guidance. Value will be ascribed, in line with the methodology and criteria detailed in Section 3.3, as well as professional judgement, in order to understand the potential impact to the HLC from the Scheme as required by the NPS EN-1 (Ref 6) and EN-3 (Ref 7).
- 3.1.6 The assessment has taken account of the Historically Important Hedgerows, as defined under the Hedgerows Regulations 1997, which considers hedgerows of particular archaeological, historical, or ecological significance. The contribution the Historically Important Hedgerows to the 'value' of the HLC units has been considered. They have been used to inform the assessment in this document, however, they are not discussed here in detail.

Table 1: Information Sources

Source	Data	Detail
Local Authority	Local plan document, guidance which steers development and conservation and raw HLC data.	Local Plan, Local Historic Environment Records (HER)
Wiltshire and Swindon Historic Landscape Characterisation (WSHLC)	Assessment of historic landscape types within Wiltshire	Documents available online: https://doi.org/10.5284/1042742 .
Historic Mapping	Indication of change over time within HLC units.	Historic Ordnance Survey (OS) early drawings and maps from the first edition to the present day.
Online Sources	Web-published local history	British History Online, The genealogist, Blackwell's mapping
Archives	Historic archive collections	Historic estate maps, tithe mapping etc.
Client Information	Plans, proposals, design intent and known parameters	Proposed development plans, technical reports etc.

3.2 Site Visits

3.2.1 Visits to the individual Solar PV Sites were undertaken on the 12th to the 14th February 2025 in overcast conditions. The site visits were undertaken to provide a greater understanding of the aspects that contribute to the HLC units 'value', informed by professional judgement. Additionally, they were used to inform potential impacts.

4 Baseline Information

- 4.1.1 The Historic Landscape Characterisation (HLC) for Wilshire (Ref 11) was carried out from April 2012 to February 2017 as part of a national initiative by Historic England to identify and record the historic character and time depth present in the modern landscape across England.

4.2 Solar PV Sites

- 4.2.1 There are 250 HLC units mapped within the 2km Study Area of the Solar PV sites, representing nine of the fourteen broad character types mapped across the county (*Civic; Fields and Enclosed Land; Military; Orchards and Horticulture; Ornamental; Recreation; Rural Settlement; Urban Settlement; and Woodland*).
- 4.2.2 There are 31 units within, or partially within the Solar PV Sites, all of which are of the *Fields and Enclosed Land* Broad HLC Type. Of these units, eleven are categorised as Piecemeal Enclosure, nine are categorised as Amalgamated Enclosure, seven are categorised as Planned Enclosure, two are categorised as Re-Organised Fields, one is categorised as Prairie Fields and one is categorised as Assarts.

Lime Down A

- 4.2.3 Within Lime Down A there are five HLC units that were mapped by the WSHLC, listed in **Table 2** below (Figure 12-3-1).

Table 2: Gazetteer of HLC units within Lime Down A

HLC ID	Landscape Type	HLC Type	Period	Name
HWI3165	Fields and enclosed land	Amalgamated fields	21st Century	N/A
HWI3166	Fields and enclosed land	Piecemeal enclosure	Post-Medieval to 21st Century	N/A
HWI3167	Fields and enclosed land	Prairie fields (>15ha)	21st Century	N/A
HWI3169	Fields and enclosed land	Amalgamated fields	21st Century	N/A
HWI3182	Fields and enclosed land	Assarts	Late 19th Century to 21st Century	N/A

Lime Down B

- 4.2.4 The WSHLC defines four HLC units within Lime Down B, listed in **Table 3** below (Figure 12-3-2)

Table 3: Gazetteer of HLC Units within Lime Down B.

HLC ID	Landscape Type	HLC Type	Period	Name
HWI3294	Fields and enclosed land	Piecemeal enclosure	Post-Medieval to 21st Century	N/A
HWI4108	Fields and enclosed land	Piecemeal enclosure	Late 19th Century to 21st Century	N/A
HWI4109	Fields and enclosed land	Piecemeal enclosure	Late 19th Century to 21st Century	N/A
HWI4111	Fields and enclosed land	Re-organised fields	21st Century	N/A

Lime Down C

4.2.5 Within Lime Down C, there are eight HLC units that were mapped by the by the WSHLC, listed in **Table 4** below (Figure 12-3-3).

Table 4: Gazetteer of HLC units within Lime Down C

HLC ID	Landscape Type	HLC Type	Period	Name
HWI3206	Fields and enclosed land	Amalgamated fields	21st Century	N/A
HWI3207	Fields and enclosed land	Amalgamated fields	21st Century	N/A
HWI3209	Fields and enclosed land	Piecemeal enclosure	Post-Medieval to 21st Century	N/A
HWI3262	Fields and enclosed land	Amalgamated fields	21st Century	N/A
HWI3263	Fields and enclosed land	Planned enclosure	Post-Medieval to 21st Century	N/A
HWI3271	Fields and enclosed land	Re-organised fields	21st Century	N/A
HWI3295	Fields and enclosed land	Amalgamated fields	21st Century	N/A

Lime Down D

4.2.6 Within Lime Down D, there are seven HLC units that were mapped by the WSHLC, listed in **Table 5** below (Figure 12-3-4).

Table 5: Gazetteer of HLC units within Lime Down D

HLC ID	Landscape Type	HLC Type	Period	Name
HWI3290	Fields and enclosed land	Planned enclosure	Post-Medieval to 21st Century	N/A
HWI3324	Fields and enclosed land	Amalgamated fields	21st Century	N/A
HWI3326	Fields and enclosed land	Amalgamated fields	21st Century	N/A
HWI3333	Fields and enclosed land	Piecemeal enclosure	Late 19th Century to 21st Century	N/A
HWI3334	Fields and enclosed land	Piecemeal enclosure	Late 19th Century to 21st Century	N/A
HWI3575	Fields and enclosed land	Piecemeal enclosure	Post-Medieval to 21st Century	N/A

Lime Down E

4.2.7 Within Lime Down E, there are ten HLC units that were mapped by the WSHLC, listed in **Table 6** (Figure 12-3-5).

Table 6: Gazetteer of HLC units within Lime Down E

HLC ID	Landscape Type	HLC Type	Period	Name
HWI3337	Fields and enclosed land	Planned enclosure	Post-Medieval to 21st Century	N/A
HWI3340	Fields and enclosed land	Amalgamated fields	Post-Medieval to 21st Century	N/A
HWI3350	Fields and enclosed land	Planned enclosure	Post-Medieval to 21st Century	N/A
HWI3352	Fields and enclosed land	Planned enclosure	Late 19th Century to 21st Century	N/A
HWI3353	Fields and enclosed land	Planned enclosure	Post-Medieval to 21st Century	N/A
HWI3354	Fields and enclosed land	Planned enclosure	Post-Medieval to 21st Century	N/A

HLC ID	Landscape Type	HLC Type	Period	Name
HWI3355	Fields and enclosed land	Piecemeal enclosure	Post-Medieval to 21st Century	Rodbourn Bottom
HWI4396	Fields and enclosed land	Piecemeal enclosure	Post-Medieval to 21st Century	N/A
HWI4397	Fields and enclosed land	Piecemeal enclosure	Post-Medieval to 21st Century	N/A

4.3 Cable Route Corridor and Highway Improvement Areas

- 4.3.1 There are 184 individual HLC units mapped within the 250m Study Area from the Cable Route Corridor and Highway Improvement Areas, representing eight of the fourteen broad character types mapped across the county (*Civic; Fields and Enclosed Land; Industrial and Extractive; Ornamental; Recreation; Rural Settlement; Unimproved Land; and Woodland*).
- 4.3.2 There are 94 individual HLC units within, or partially within the Cable Route Corridor and Highway Improvement Areas (Figures 12-3-4 to 12-3-10). All but thirteen of these HLC are categorised as *Fields and Enclosed Land* broad HLC type. The outliers include five HLC units of the *Rural Settlement* broad type, three of which are classified as the primary type *Farmstead*, one as a *Hamlet* and one as a *Country House*. Four of the outlying HLC units are classified as the *Woodland* broad type, three of which are classified as *Ancient Semi-Natural Woodland* primary type and one as the *Secondary Woodland* primary type. Two of the outlying HLC units are classed as the *Recreational* broad type, one of which is classified as a *Golf Course* and the other as *Gallops*. There is one outlying unit with the *Ornamental* broad type which is classified as the *Parkland* primary type. The final outlying unit has been classified as the *Civic* broad type which is of the *Substation/Telephone Exchange* primary type.
- 4.3.3 Of the 81 remaining units with the *Fields and Enclosed Land* broad HLC type, 32 units are of the *Piecemeal Enclosure* primary type, 26 are of the *Amalgamated Fields* primary type, 11 are of the *Re-organised Fields* primary type, six are of the *Planned Enclosure* primary type, two are of the *Paddocks* primary type, two are of the *Meadows* primary type, one is of the *Prairie Fields* primary type and the final unit is of the *Assarts* primary type.

4.3.4 **Table 7:** Gazetteer of HLC units within the Lime Down Cable Route Corridor below details the 94 HLC units located within in the Lime Down Cable Route Corridor and Highway Improvement Areas.

Table 7: Gazetteer of HLC units within the Lime Down Cable Route Corridor and Highway Improvement Areas

HLC ID	Landscape Type	HLC Type	Period	Name
HWI3166	Fields and Enclosed Land	Piecemeal enclosure	Post-Medieval to Modern	
HWI3168	Fields and Enclosed Land	Piecemeal enclosure	Post-Medieval to Modern	
HWI3169	Fields and Enclosed Land	Amalgamated fields	Modern	
HWI3170	Recreational	Gallops	Modern	
HWI3180	Woodland	Ancient semi-natural woodland	Post-Medieval to Modern	Lord's Wood
HWI3182	Fields and Enclosed Land	Assarts	Late 19th Century to Modern	
HWI3206	Fields and Enclosed Land	Amalgamated fields	Modern	
HWI3207	Fields and Enclosed Land	Amalgamated fields	Modern	
HWI3209	Fields and Enclosed Land	Piecemeal enclosure	Post-Medieval to Modern	
HWI3244	Fields and Enclosed Land	Amalgamated fields	Modern	
HWI3247	Fields and Enclosed Land	Piecemeal enclosure	Post-Medieval to Modern	
HWI3249	Fields and Enclosed Land	Re-organised fields	Modern	
HWI3250	Fields and Enclosed Land	Re-organised fields	Modern	
HWI3255	Fields and Enclosed Land	Piecemeal enclosure	Post-Medieval to Modern	
HWI3262	Fields and Enclosed Land	Amalgamated fields	Modern	
HWI3263	Fields and Enclosed Land	Planned enclosure	Post-Medieval to Modern	
HWI3265	Fields and Enclosed Land	Amalgamated fields	Modern	
HWI3266	Fields and Enclosed Land	Amalgamated fields	Modern	
HWI3267	Fields and Enclosed Land	Piecemeal enclosure	Post-Medieval to Modern	

HLC ID	Landscape Type	HLC Type	Period	Name
HWI3268	Fields and Enclosed Land	Re-organised fields	Modern	
HWI3271	Fields and Enclosed Land	Re-organised fields	Modern	
HWI3290	Fields and Enclosed Land	Planned enclosure	Post-Medieval to Modern	
HWI3291	Woodland	Secondary woodland	Modern	
HWI3292	Fields and Enclosed Land	Meadows	Post-Medieval to Modern	
HWI3293	Fields and Enclosed Land	Planned enclosure	Post-Medieval to Modern	
HWI3294	Fields and Enclosed Land	Piecemeal enclosure	Post-Medieval to Modern	
HWI3295	Fields and Enclosed Land	Amalgamated fields	Modern	
HWI3296	Fields and Enclosed Land	Amalgamated fields	Modern	
HWI3297	Fields and Enclosed Land	Re-organised fields	Modern	
HWI3306	Fields and Enclosed Land	Re-organised fields	Modern	
HWI3322	Fields and Enclosed Land	Planned enclosure	Post-Medieval to Modern	
HWI3324	Fields and Enclosed Land	Amalgamated fields	Modern	
HWI3325	Rural Settlement	Farmstead	Modern	Kingsway Farm and Nursery
HWI3326	Fields and Enclosed Land	Amalgamated fields	Modern	
HWI3334	Fields and Enclosed Land	Piecemeal enclosure	Late 19th Century to Modern	
HWI3336	Fields and Enclosed Land	Amalgamated fields	Post-Medieval to Modern	
HWI3337	Fields and Enclosed Land	Planned enclosure	Post-Medieval to Modern	
HWI3338	Woodland	Ancient semi-natural woodland	Post-Medieval to Modern	Bincombe Wood
HWI3339	Woodland	Ancient semi-natural woodland	Post-Medieval to Modern	North Bincombe Wood
HWI3340	Fields and Enclosed Land	Amalgamated fields	Post-Medieval to Modern	

HLC ID	Landscape Type	HLC Type	Period	Name
HWI3341	Fields and Enclosed Land	Piecemeal enclosure	Post-Medieval to Modern	
HWI3355	Fields and Enclosed Land	Piecemeal enclosure	Post-Medieval to Modern	Rodbourne Bottom
HWI3356	Fields and Enclosed Land	Piecemeal enclosure	Post-Medieval to Modern	
HWI3486	Fields and Enclosed Land	Amalgamated fields	Modern	
HWI3487	Fields and Enclosed Land	Paddocks	Modern	
HWI3490	Fields and Enclosed Land	Piecemeal enclosure	Post-Medieval to Modern	Broomfield Farm
HWI3491	Fields and Enclosed Land	Piecemeal enclosure	Post-Medieval to Modern	
HWI3519	Fields and Enclosed Land	Piecemeal enclosure	Late 19th Century to Modern	
HWI3550	Fields and Enclosed Land	Piecemeal enclosure	Post-Medieval to Modern	
HWI3551	Fields and Enclosed Land	Amalgamated fields	Modern	
HWI3553	Fields and Enclosed Land	Piecemeal enclosure	Post-Medieval to Modern	
HWI3555	Fields and Enclosed Land	Piecemeal enclosure	Post-Medieval to Modern	
HWI3556	Fields and Enclosed Land	Planned enclosure	Post-Medieval to Modern	
HWI3562	Fields and Enclosed Land	Piecemeal enclosure	Post-Medieval to Modern	
HWI3563	Fields and Enclosed Land	Piecemeal enclosure	Post-Medieval to Modern	Grove Farm
HWI3579	Fields and Enclosed Land	Piecemeal enclosure	Post-Medieval to Modern	
HWI4109	Fields and Enclosed Land	Piecemeal enclosure	Late 19th Century to Modern	
HWI4111	Fields and Enclosed Land	Re-organised fields	Modern	
HWI4203	Fields and Enclosed Land	Amalgamated fields	Modern	
HWI4412	Fields and Enclosed Land	Piecemeal enclosure	Post-Medieval to Modern	

HLC ID	Landscape Type	HLC Type	Period	Name
HWI4413	Fields and Enclosed Land	Amalgamated fields	Modern	
HWI4416	Fields and Enclosed Land	Amalgamated fields	Modern	
HWI4417	Fields and Enclosed Land	Piecemeal enclosure	Post-Medieval to Modern	
HWI4420	Fields and Enclosed Land	Piecemeal enclosure	Post-Medieval to Modern	
HWI4423	Fields and Enclosed Land	Re-organised fields	Modern	
HWI4442	Fields and Enclosed Land	Amalgamated fields	Modern	
HWI4452	Fields and Enclosed Land	Meadows	Post-Medieval to Modern	
HWI4462	Fields and Enclosed Land	Piecemeal enclosure	Post-Medieval to Modern	
HWI4582	Fields and Enclosed Land	Piecemeal enclosure	Post-Medieval to Modern	
HWI4583	Fields and Enclosed Land	Amalgamated fields	Modern	
HWI4584	Fields and Enclosed Land	Piecemeal enclosure	Post-Medieval to Modern	
HWI4585	Fields and Enclosed Land	Re-organised fields	Modern	
HWI4592	Fields and Enclosed Land	Piecemeal enclosure	Post-Medieval to Modern	
HWI4593	Rural Settlement	Farmstead	Post-Medieval to Modern	Thingley Court Farm
HWI4823	Fields and Enclosed Land	Amalgamated fields	Modern	
HWI4840	Fields and Enclosed Land	Piecemeal enclosure	Post-Medieval to Modern	
HWI4841	Fields and Enclosed Land	Amalgamated fields	Modern	
HWI4842	Fields and Enclosed Land	Prairie fields (>15ha)	Modern	
HWI4846	Fields and Enclosed Land	Paddocks	Modern	
HWI4852	Fields and Enclosed Land	Amalgamated fields	Modern	
HWI4853	Fields and Enclosed Land	Amalgamated fields	Modern	
HWI4854	Fields and Enclosed Land	Piecemeal enclosure	Post-Medieval to Modern	

HLC ID	Landscape Type	HLC Type	Period	Name
HWI4855	Fields and Enclosed Land	Piecemeal enclosure	Post-Medieval to Modern	
HWI4857	Fields and Enclosed Land	Re-organised fields	Modern	
HWI4881	Rural Settlement	Farmstead	Modern	
HWI4904	Fields and Enclosed Land	Amalgamated fields	Modern	Westland Farm
HWI4905	Recreational	Golf course	Modern	Whitley Golf Club
HWI4906	Civic	Substation/telephone exchange	Modern	Electricity substation
HWI4907	Fields and Enclosed Land	Piecemeal enclosure	Post-Medieval to Modern	
HWI4919	Rural Settlement	Hamlet	Modern	Beanacre
HWI5311	Rural Settlement	Country house	Post-Medieval to Modern	Whitley House and Barn
HWI5433	Fields and Enclosed Land	Re-organised fields	Modern	Boyds Farm
HWI5434	Ornamental	Parkland	Post-Medieval to Modern	Monk's Park
HWI7626	Fields and Enclosed Land	Amalgamated fields	Modern	

5 Assessment of Significance

- 5.1.1 Although Historic England guidance (Ref 5) states that “*HLC does not attach an expert’s ascription of significance or value, recognising that these are not immutable*”, an assessment of value has been undertaken in consideration of Historic England’s *Statement of Heritage Significance. Analysing Significance in Heritage Assets* (Ref 4).
- 5.1.2 The Order Limits are located outside of the Cotswolds Area of Outstanding Natural Beauty and are under agrarian use. This is in contrast to the areas to the north (Westonbirt Estate) and the west (Badminton Estate) which consist of designed country estates. While land within Lime Down C is currently partially owned by the Badminton Estate (including HLC units HWI3206, HWI3207 and HWI3209) this land was purchased by the estate during the mid-20th century and does not make up part of the historic, ornamental designed estate land.
- 5.1.3 The landscape within the Order Limits of the Scheme is characterised by post-medieval or modern enclosure (including amalgamated fields, assarts, piecemeal enclosure, planned enclosure, prairie fields and re-organised fields). Within the Cable Route Corridor, the vast majority of the units are characterised as the *Fields and Enclosed Land* broad HLC types which are either post-medieval or modern enclosure. Despite the landscape being characterised by post-medieval and modern use, there is some evidence of earlier ridge and furrow in field E12 and along the Cable Route Corridor, all of which is now contained within later field systems. The other units are characterised broadly as *Civic, Ornamental, Recreational, Rural Settlement or Woodland* all of which are also characterised by either Post-Medieval or Modern activity.
- 5.1.4 Historical mapping from the 19th century to the early 20th century (see, **ES Volume 3, Appendix 12-2: Archaeological Desk-Based Assessments [EN010168/APP/6.3]**) records the changing field patterns and demonstrates that the vast majority of the land within the Order Limits has remained primarily within agricultural use throughout the post-medieval period. The present field pattern within the Order Limits retains much of its layout established in the post-medieval period, however it must be noted that, there has been removal of boundaries and amalgamation of fields within the Order Limits during the mid-late 20th century.
- 5.1.5 Overall, post-medieval enclosure is a common field pattern type across rural England and is therefore considered to have a low ‘value’ of sensitivity.
- 5.1.6 Areas characterised by modern land use are considered to have negligible value.

6 Impact Assessment

6.1 The Scheme

6.1.1 The Scheme comprises a solar photovoltaic (PV) electricity generating station of over 50 megawatts (MW) and ‘associated development’ comprising up to 500 MW export capacity Battery Energy Storage System (BESS), grid connection infrastructure and other infrastructure integral to the construction, operation and maintenance, and decommissioning phases. A full impact assessment has been included in the Environmental Statement (ES) (**ES Volume 1, Chapter 12: Cultural Heritage [EN010168/APP/6.1]**).

6.2 Potential Impacts to Historic Landscape Character

6.2.1 The Scheme will see the construction of solar and associated infrastructure in fields that are currently used for arable production. As a result, there will be a temporary change in the land use for the Scheme duration from agrarian to energy production.

6.2.2 There is potential for the removal of discrete sections of hedgerow during the construction phase of the Scheme, during the installation of the Cable Route Corridor and to widen access points for HGVs. Any such impacts are likely to be minimal as only small sections of hedgerows will require removal, as opposed to full field boundaries. Where possible, hedgerow removal will be reinstated, resulting in these impacts being largely temporary and reversible in nature.

6.2.3 The Scheme is therefore considered to cause a low level of impact to the overall character of the historic landscape (i.e. less than substantial harm at the lower end of the scale in NPPF/NPS terms). Elements that characterise the historic landscape within the Order Limits (such as hedgerows) will be retained, and any temporary change in land use will be reversed following decommissioning. It is considered that the Scheme will not alter the ability to understand the HLC within the Order Limits and the legibility of the historic landscape and field patterns will be maintained.

6.2.4 The landscape mitigation proposals include the reinforcement of existing hedgerows with native species. Where new field boundaries are required, the Scheme will look where possible to reinstate historically documented field boundaries. Landscape mitigation is expected to reach maturity by Year 15 of the Scheme. Where these mitigation proposals enhance the landscape character they will be retained as far as feasibly possible following decommissioning, as part of a legacy landscape.

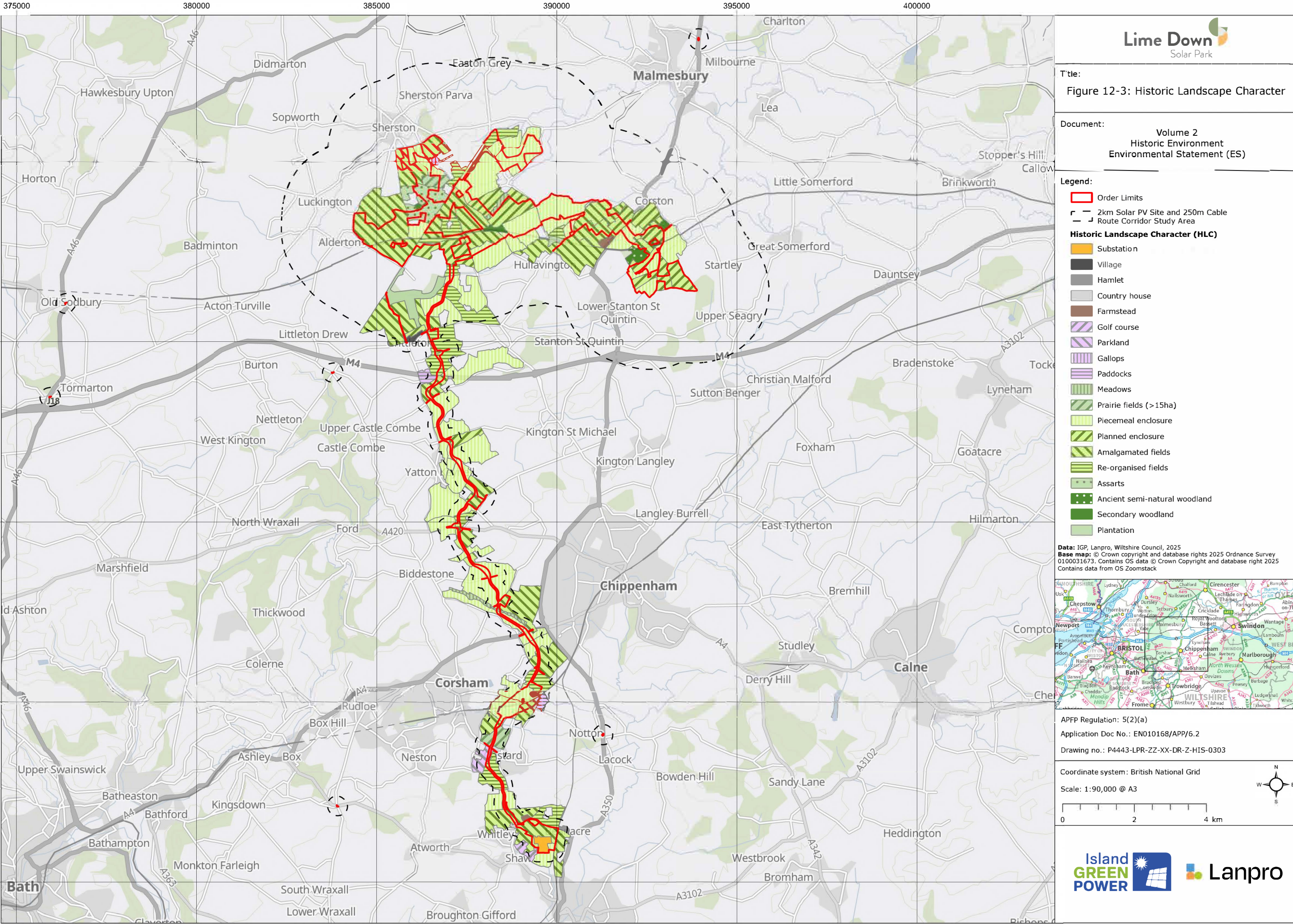
7 Conclusion

- 7.1.1 The majority of the landscape within the Order Limits is characterised by a field pattern comprising post-medieval and modern enclosure. Where post-medieval enclosure survives, this is evidenced by the layout of fields in relation to historical mapping (e.g. 19th century Ordnance Survey mapping) and the HLC assessment produced for Wiltshire (Ref 11). The character of the field patterns are common throughout rural England and are considered to have a low value of local interest as part of this assessment. A number of the historic field patterns within the Order Limits have also been subject to 20th century amalgamation meaning that they are of modern configuration. Within the Cable Route Corridor there are also four areas characterised by non-agricultural modern land uses, one of which falls within the Highways Improvement Areas. Areas characterised by modern land use are considered to have a negligible value in terms of the historic landscape.
- 7.1.2 The nature of the Scheme means that the legibility of the historic field patterns which constitutes the present landscape character, as defined by individual HLC units, will be retained. Existing boundaries and hedgerows will be maintained as far as possible, and all development will be reversible following decommissioning, with minimal residual landscape changes.
- 7.1.3 Overall, Scheme is therefore considered to cause a **low level of impact to the character of the historic landscape (i.e. less than substantial harm at the lower end of the scale in NPPF / NPS terms)**. Consequently, it is considered that the Scheme will not alter the ability to understand or experience the HLC within the Order Limits and the legibility of the historic landscape will be maintained.

8 References

- Ref 1 Ancient Monuments and Archaeological Areas Act, (AMAAA) 1979.
Available from: <https://www.legislation.gov.uk/ukpga/1979/46>
- Ref 2 ClfA 2020, Standard and guidance for historic environment desk-based assessment
- Ref 3 English Heritage and The Highways Agency 2007, Assessing the effects of Road Schemes on HLC
- Ref 4 Historic England 2019, Statement of Heritage Significance. Analysing Significance in Heritage Assets
- Ref 5 Historic England 2025, Historic Landscape Characterisation: A Tool for Understanding and Managing Whole Areas. Available at:
[Redacted]
[Redacted] [Date Accessed 03/03/2025]
- Ref 6 NPS 2024a, Overarching National Policy Statement for Energy (EN-1)
- Ref 7 NPS 2024b, National Policy Statement for renewable energy infrastructure (EN-3)
- Ref 8 NPS, 2024c. National Policy Statement for electricity networks infrastructure (EN-5).
- Ref 9 NPPF 2024, National Planning Policy Framework
- Ref 10 PPG 2024, Planning Practice Guidance,
<https://www.gov.uk/government/collections/planning-practice-guidance>
- Ref 11 Sunley 2017, Wiltshire and Swindon Historic Landscape Characterisation (WSHLC), Available Online At:
https://archaeologydataservice.ac.uk/archives/view/wiltshire_hlc_2017/index.cfm [Date Accessed: 01/05/2025]
- Ref 12 The Planning Act, 2008. Available from:
<https://www.legislation.gov.uk/ukpga/2008/29/contents>
- Ref 13 Wiltshire Council 2015, Wiltshire Core Strategy

Figures



Title:
Figure 12-3: Historic Landscape Character

Document:
Volume 2
Historic Environment
Environmental Statement (ES)

- Legend:
- Order Limits
 - 2km Solar PV Site and 250m Cable Route Corridor Study Area
 - Historic Landscape Character (HLC)**
 - Substation
 - Village
 - Hamlet
 - Country house
 - Farmstead
 - Golf course
 - Parkland
 - Gallops
 - Paddocks
 - Meadows
 - Prairie fields (>15ha)
 - Piecemeal enclosure
 - Planned enclosure
 - Amalgamated fields
 - Re-organised fields
 - Assarts
 - Ancient semi-natural woodland
 - Secondary woodland
 - Plantation

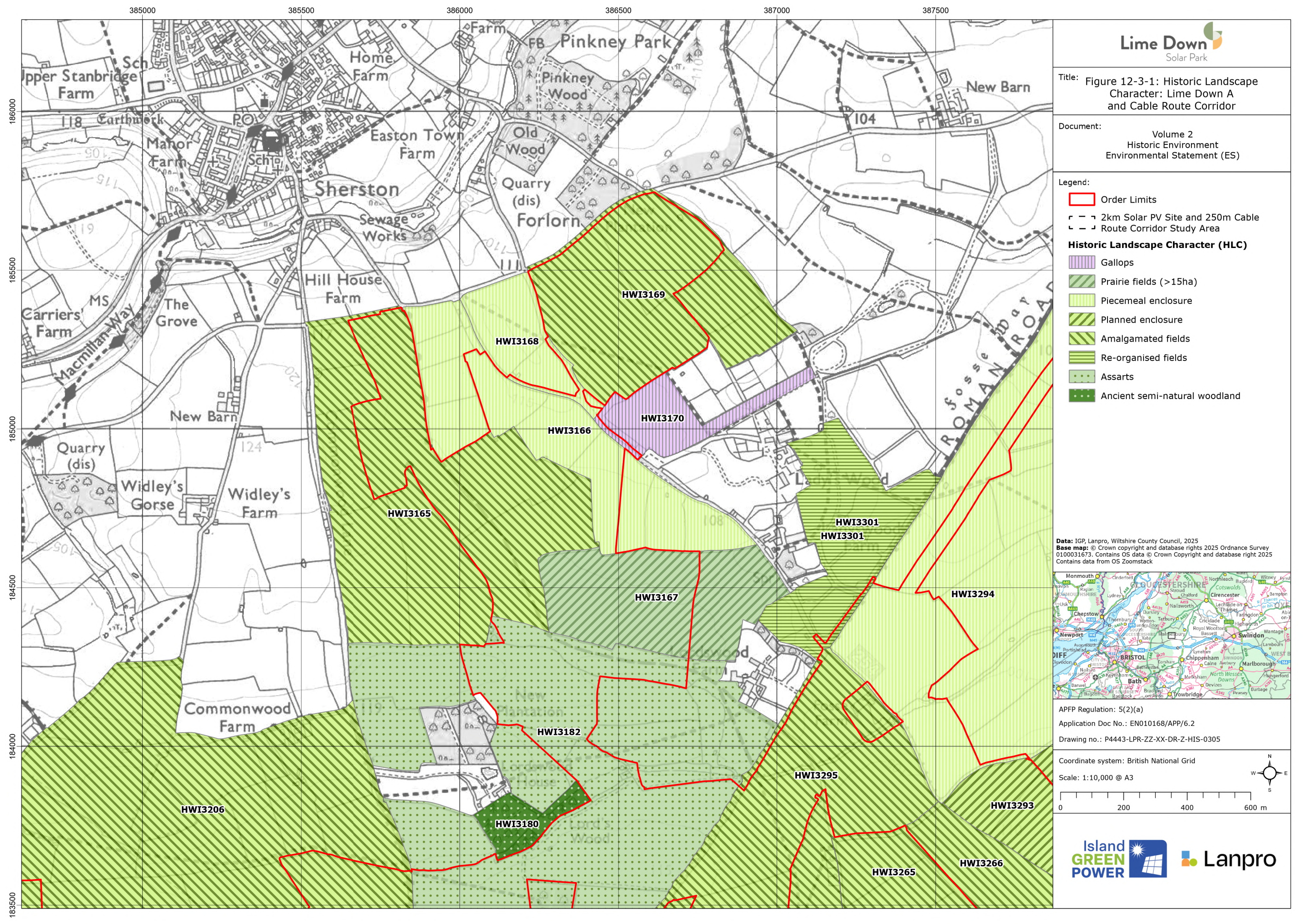
Data: IGP, Lanpro, Wiltshire Council, 2025.
Base map: © Crown copyright and database rights 2025 Ordnance Survey 0100031673. Contains OS data © Crown Copyright and database right 2025. Contains data from OS Zoomstack

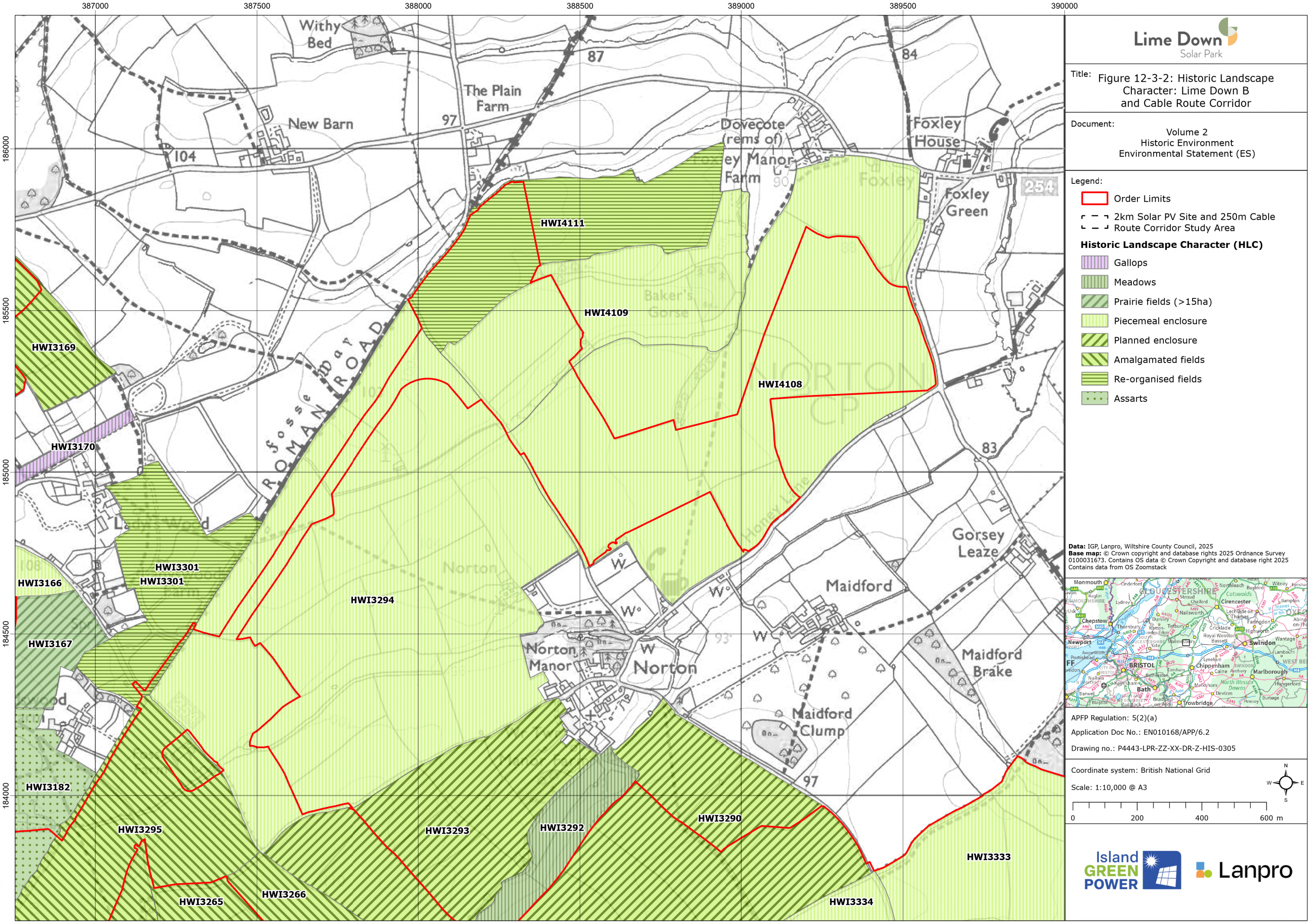


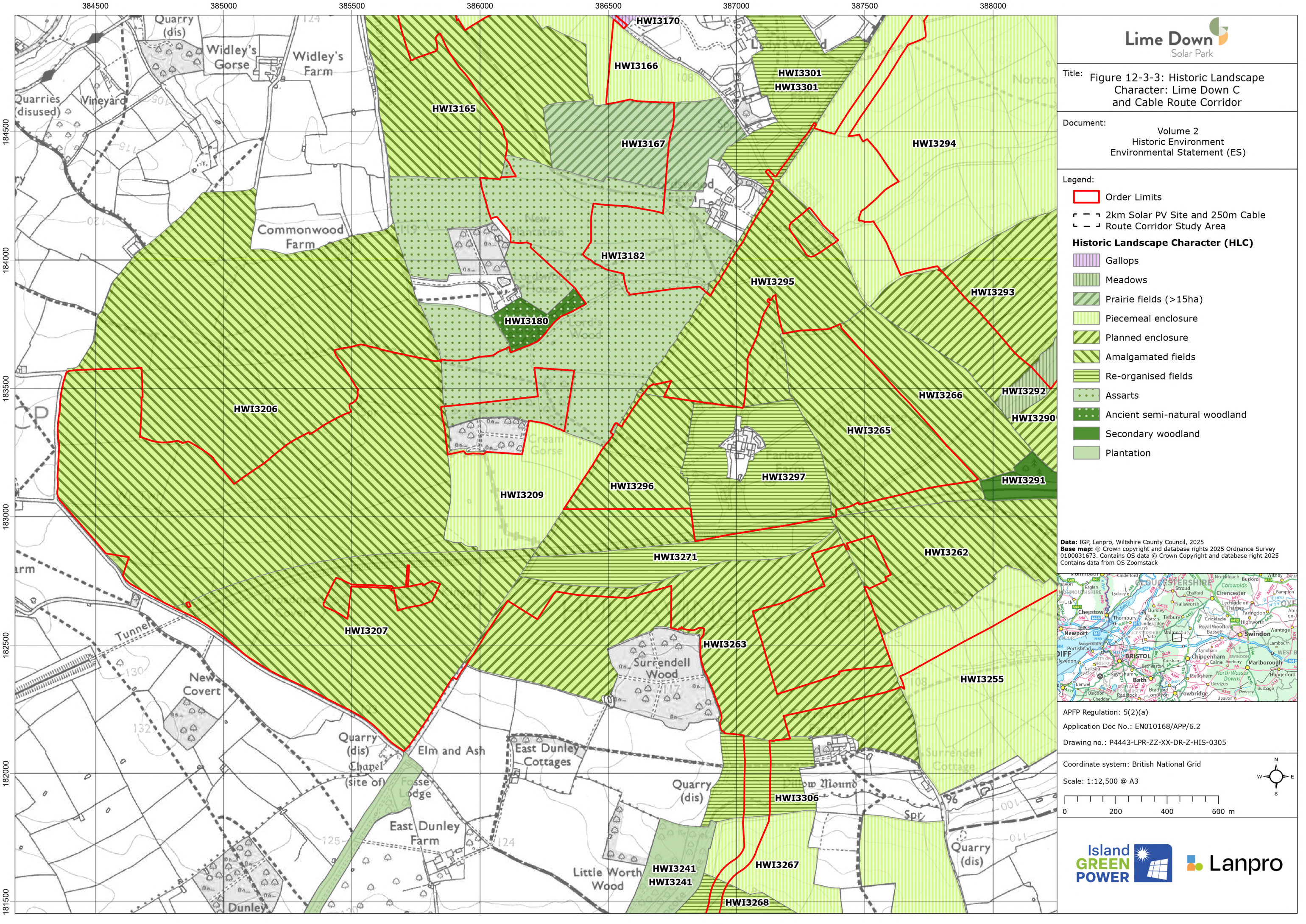
APFP Regulation: 5(2)(a)
Application Doc No.: EN010168/APP/6.2
Drawing no.: P4443-LPR-ZZ-XX-DR-Z-HIS-0303

Coordinate system: British National Grid
Scale: 1:90,000 @ A3









Title: Figure 12-3-3: Historic Landscape
Character: Lime Down C
and Cable Route Corridor

Document: Volume 2
Historic Environment
Environmental Statement (ES)

Legend:

- Order Limits
- 2km Solar PV Site and 250m Cable
- Route Corridor Study Area

Historic Landscape Character (HLC)

- Gallops
- Meadows
- Prairie fields (>15ha)
- Piecemeal enclosure
- Planned enclosure
- Amalgamated fields
- Re-organised fields
- Assarts
- Ancient semi-natural woodland
- Secondary woodland
- Plantation

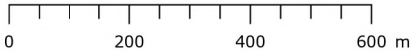
Data: IGP, Lanpro, Wiltshire County Council, 2025
Base map: © Crown copyright and database rights 2025 Ordnance Survey
0100031673; Contains OS data © Crown Copyright and database right 2025
Contains data from OS Zoomstack

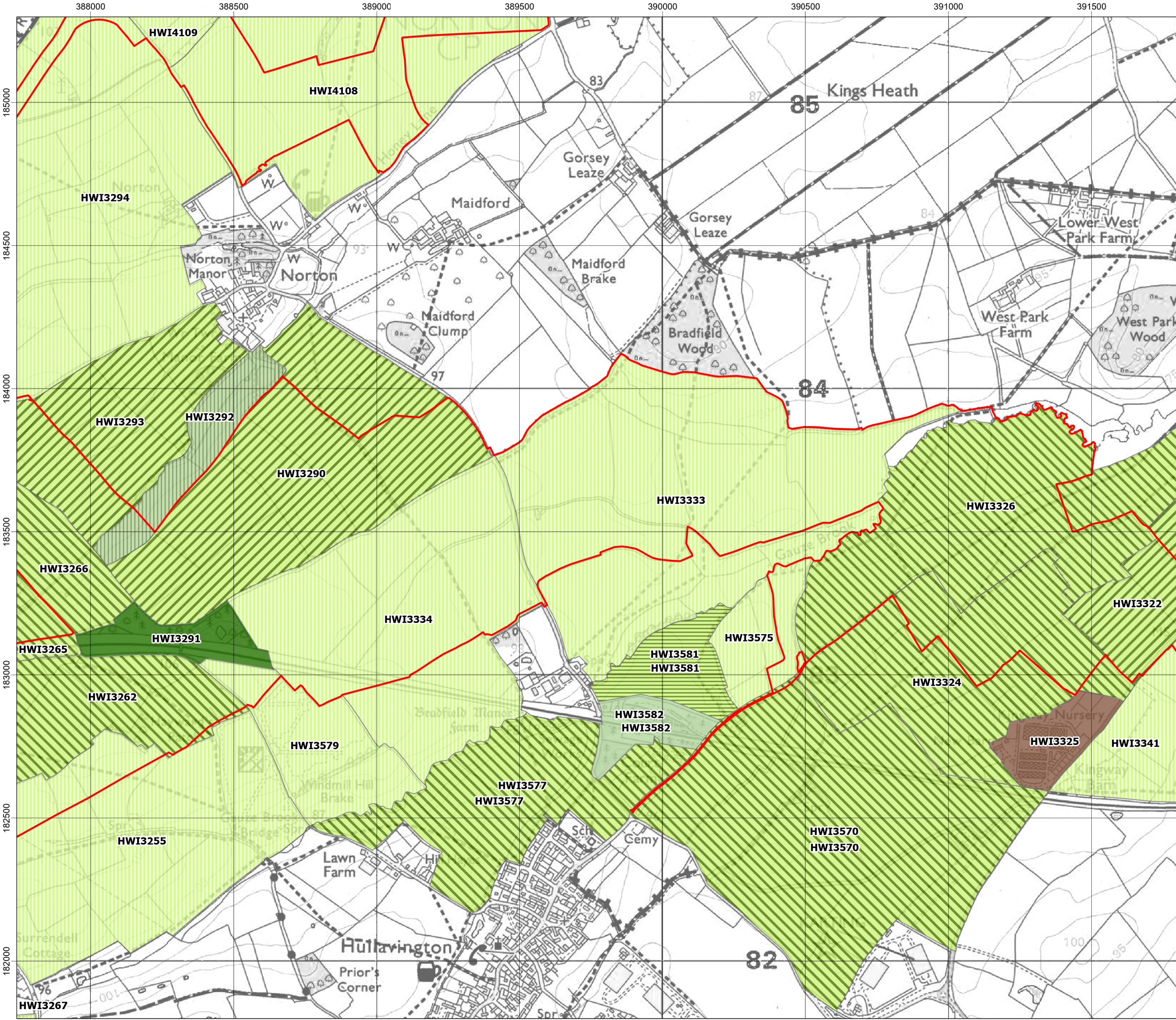



APFP Regulation: 5(2)(a)
Application Doc No.: EN010168/APP/6.2
Drawing no.: P4443-LPR-ZZ-XX-DR-Z-HIS-0305

Coordinate system: British National Grid

Scale: 1:12,500 @ A3













Title: Figure 12-3-4: Historic Landscape Character: Lime Down D and Cable Route Corridor

Document: Volume 2
Historic Environment
Environmental Statement (ES)

Legend:

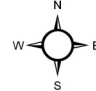

-  Order Limits
-  2km Solar PV Site and 250m Cable Route Corridor Study Area
- Historic Landscape Character (HLC)**
-  Farmstead
-  Meadows
-  Piecemeal enclosure
-  Planned enclosure
-  Amalgamated fields
-  Re-organised fields
-  Secondary woodland
-  Plantation



Data: IGP, Lanpro, Wiltshire County Council, 2025
Base map: © Crown copyright and database rights 2025 Ordnance Survey 0100031673, Contains OS data © Crown Copyright and database right 2025 Contains data from OS Zoomstack

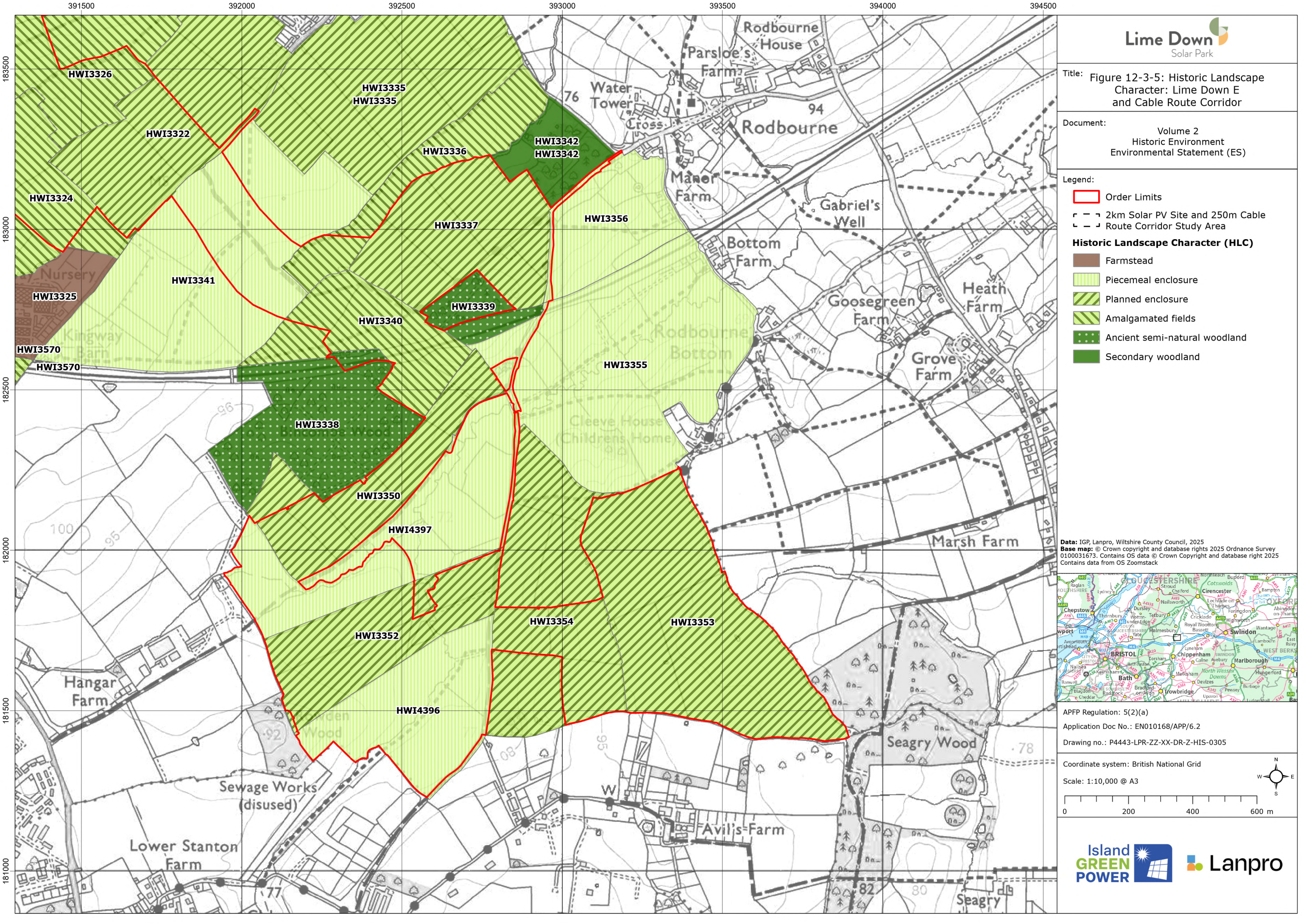


APFP Regulation: 5(2)(a)
Application Doc No.: EN010168/APP/6.2
Drawing no.: P4443-LPR-ZZ-XX-DR-Z-HIS-0305

Coordinate system: British National Grid
Scale: 1:12,500 @ A3





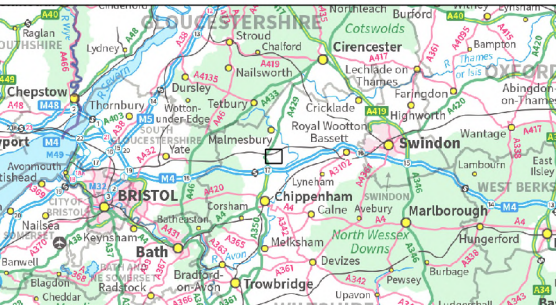


Title: Figure 12-3-5: Historic Landscape
Character: Lime Down E
and Cable Route Corridor

Document:
Volume 2
Historic Environment
Environmental Statement (ES)

- Legend:
- Order Limits
 - 2km Solar PV Site and 250m Cable
 - Route Corridor Study Area
- Historic Landscape Character (HLC)**
- Farmstead
 - Piecemeal enclosure
 - Planned enclosure
 - Amalgamated fields
 - Ancient semi-natural woodland
 - Secondary woodland

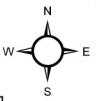
Data: IGP, Lanpro, Wiltshire County Council, 2025
Base map: © Crown copyright and database rights 2025 Ordnance Survey
0100031673; Contains OS data © Crown Copyright and database right 2025
Contains data from OS Zoomstack

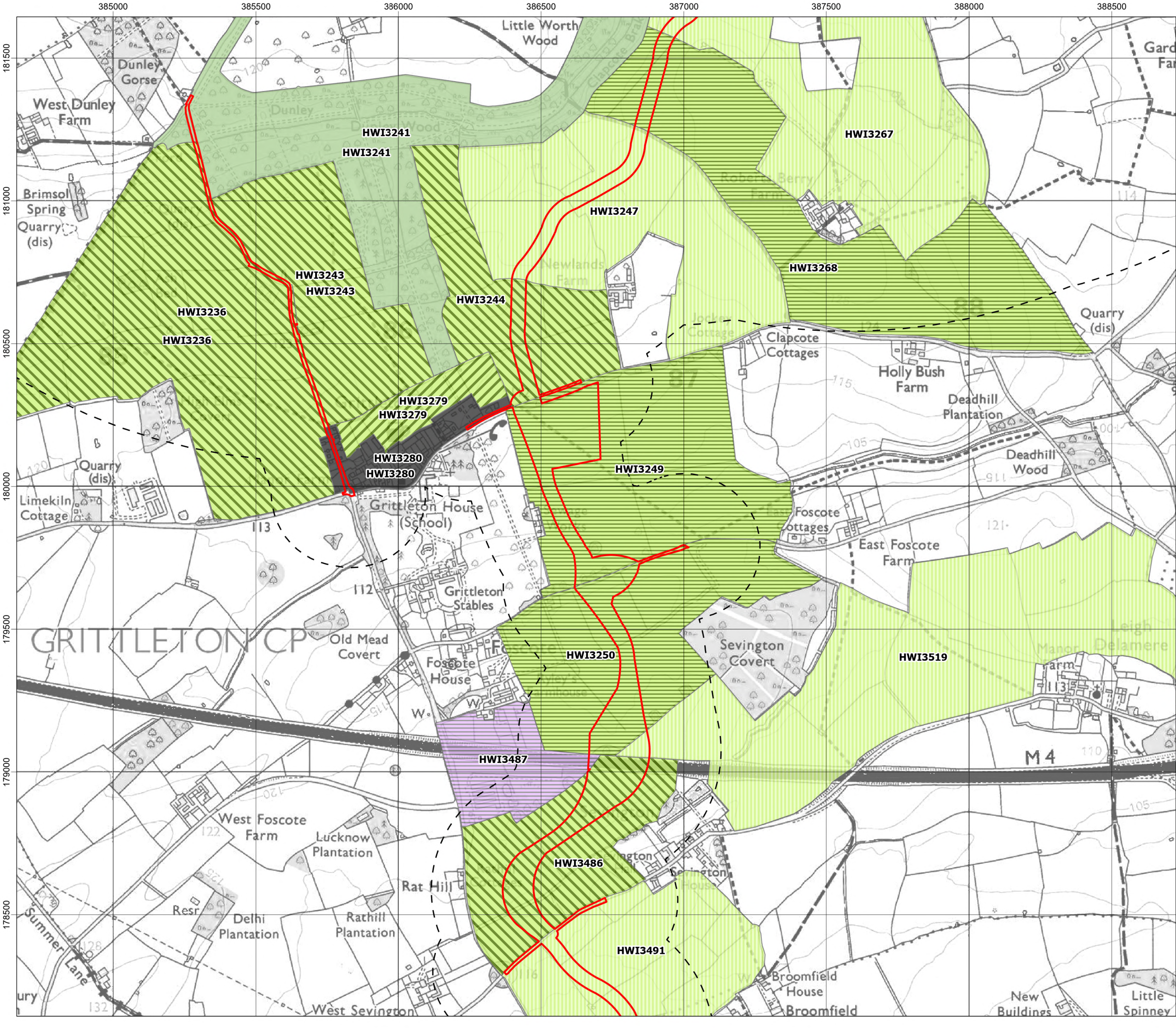


APFP Regulation: 5(2)(a)
Application Doc No.: EN010168/APP/6.2
Drawing no.: P4443-LPR-ZZ-XX-DR-Z-HIS-0305

Coordinate system: British National Grid

Scale: 1:10,000 @ A3



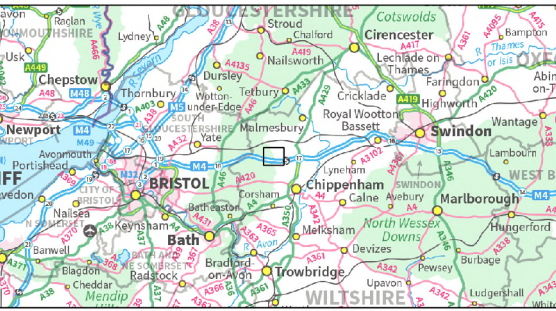


Title:
Figure 12-3-6: Historic Landscape
Character: Lime Down Cable Route Corridor

Document:
Volume 2
Historic Environment
Environmental Statement (ES)

- Legend:
- Order Limits
 - 2km Solar PV Site and 250m Cable
 - Route Corridor Study Area
 - Historic Landscape Character (HLC)**
 - Village
 - Paddocks
 - Piecemeal enclosure
 - Planned enclosure
 - Amalgamated fields
 - Re-organised fields
 - Plantation

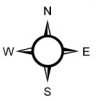
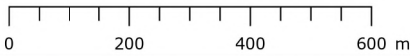
Data: IGP, Lanpro, Wiltshire County Council, 2025
Base map: © Crown copyright and database rights 2025 Ordnance Survey
0100031673; Contains OS data © Crown Copyright and database right 2025
Contains data from OS Zoomstack

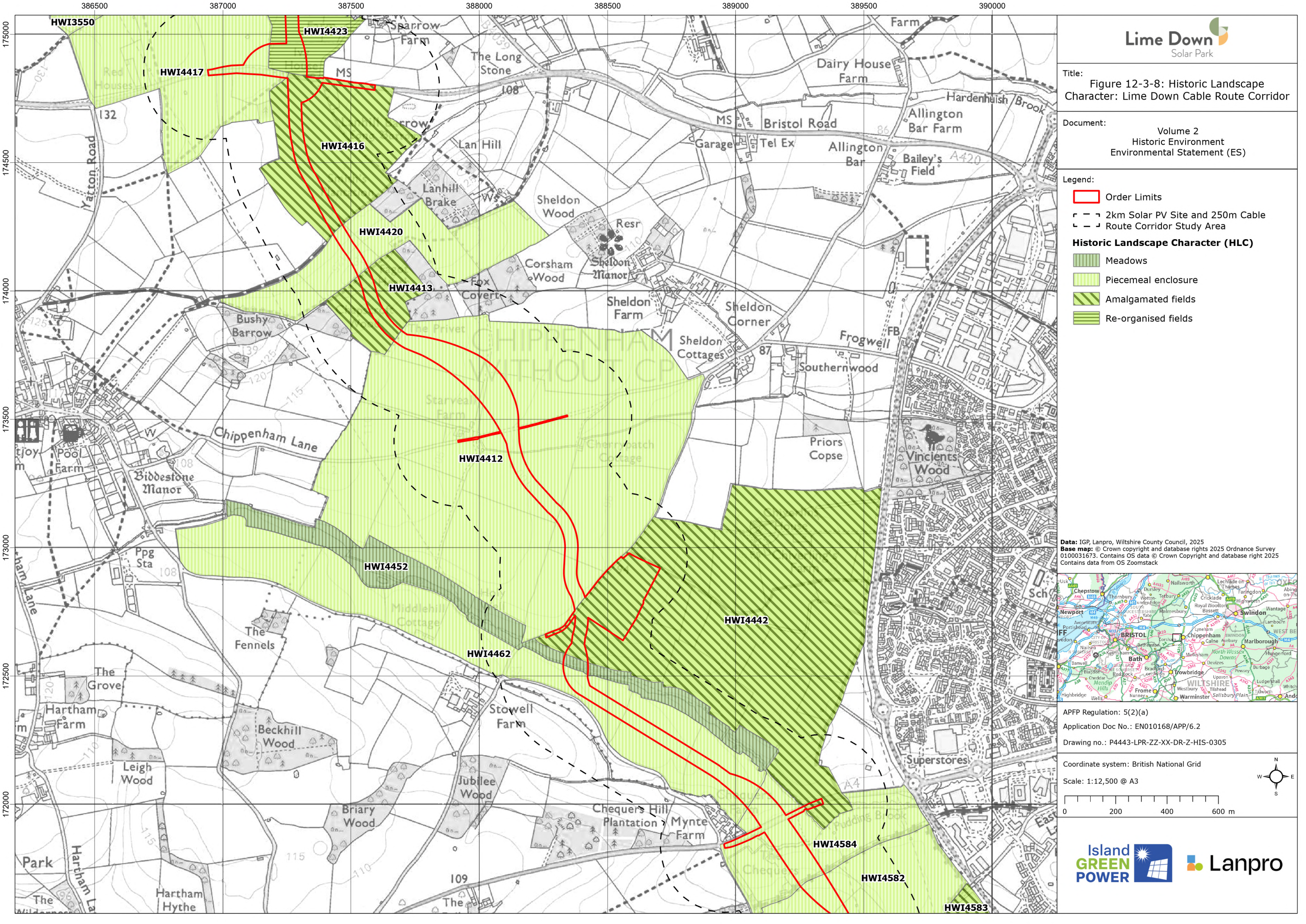


APFP Regulation: 5(2)(a)
Application Doc No.: EN010168/APP/6.2
Drawing no.: P4443-LPR-ZZ-XX-DR-Z-HIS-0305

Coordinate system: British National Grid

Scale: 1:12,500 @ A3



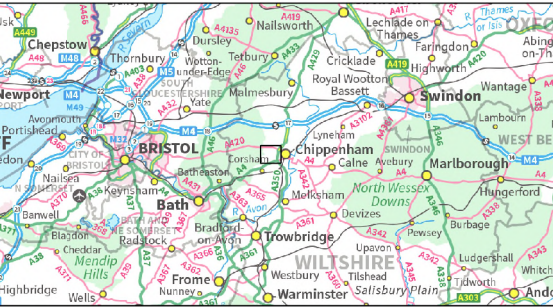


Title: Figure 12-3-8: Historic Landscape Character: Lime Down Cable Route Corridor

Document: Volume 2
Historic Environment
Environmental Statement (ES)

- Legend:
- Order Limits
 - 2km Solar PV Site and 250m Cable
 - Route Corridor Study Area
- Historic Landscape Character (HLC)**
- Meadows
 - Piecemeal enclosure
 - Amalgamated fields
 - Re-organised fields

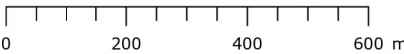
Data: IGP, Lanpro, Wiltshire County Council, 2025
Base map: © Crown copyright and database rights 2025 Ordnance Survey 0100031673. Contains OS data © Crown Copyright and database right 2025. Contains data from OS Zoomstack

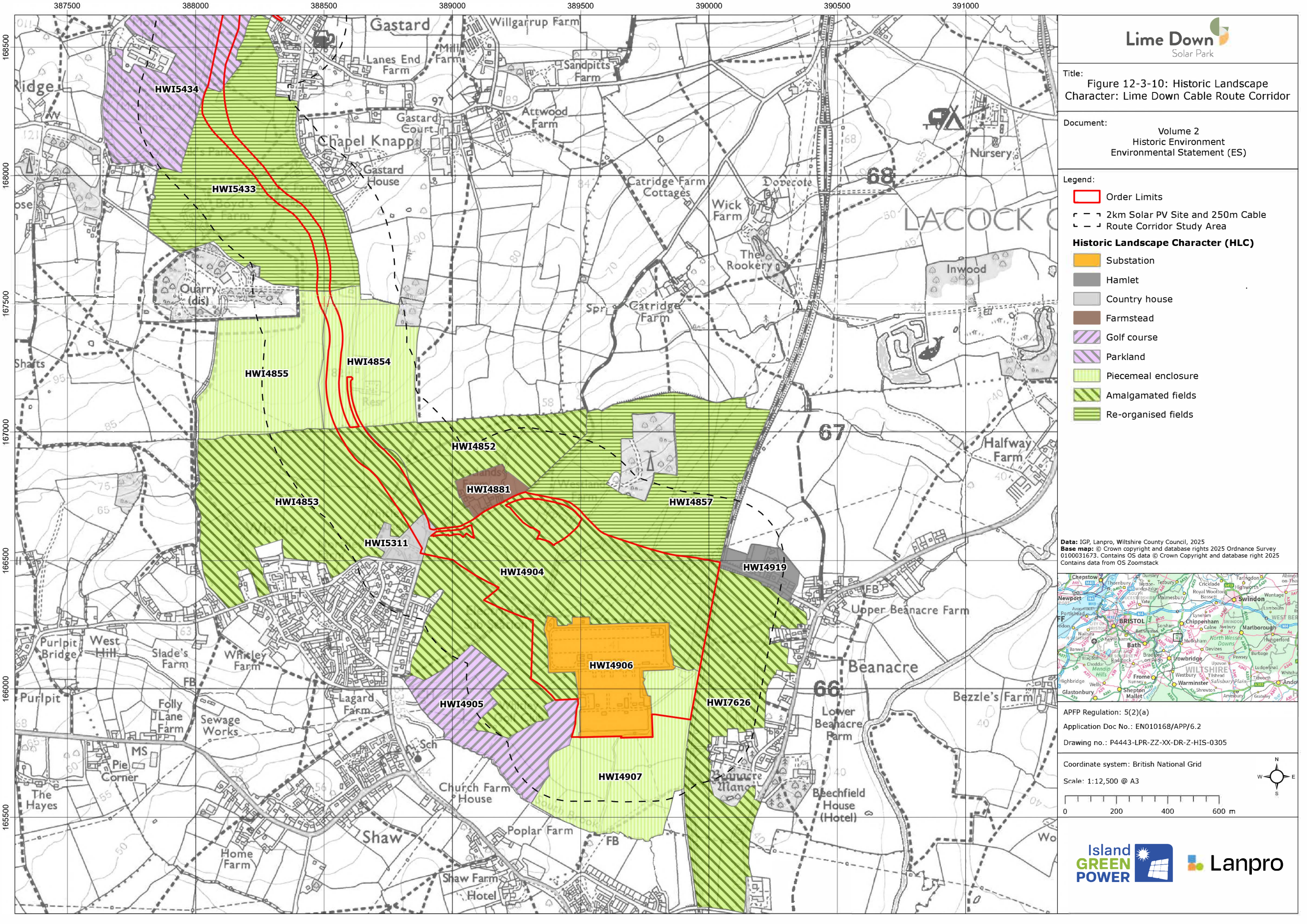


APFP Regulation: 5(2)(a)
Application Doc No.: EN010168/APP/6.2
Drawing no.: P4443-LPR-ZZ-XX-DR-Z-HIS-0305

Coordinate system: British National Grid

Scale: 1:12,500 @ A3





Title: Figure 12-3-10: Historic Landscape Character: Lime Down Cable Route Corridor

Document: Volume 2
Historic Environment
Environmental Statement (ES)

- Legend:
- Order Limits
 - 2km Solar PV Site and 250m Cable
 - Route Corridor Study Area
- Historic Landscape Character (HLC)**
- Substation
 - Hamlet
 - Country house
 - Farmstead
 - Golf course
 - Parkland
 - Piecemeal enclosure
 - Amalgamated fields
 - Re-organised fields

Data: IGP, Lanpro, Wiltshire County Council, 2025
Base map: © Crown copyright and database rights 2025 Ordnance Survey 0100031673. Contains OS data © Crown Copyright and database right 2025. Contains data from OS Zoomstack



APFP Regulation: 5(2)(a)
Application Doc No.: EN010168/APP/6.2
Drawing no.: P4443-LPR-ZZ-XX-DR-Z-HIS-0305

Coordinate system: British National Grid
Scale: 1:12,500 @ A3

0 200 400 600 m

Annex A Plates



Plate 1. HWI3165 on Site A



Plate 2. HWI3166 on Site A



Plate 3. HWI3167 on Site A



Plate 4. HWI3169 on Site A



Plate 5. HWI3182 on Site A



Plate 6. HWI3294 on Site B



Plate 7. HWI4108 on Site B



Plate 8. HWI4109 on Site B



Plate 9. HWI4111 on Site B



Plate 10. HWI3206 on Site C



Plate 11. HWI3207 on Site C



Plate 12. HWI3209 on Site C



Plate 13. HWI3262 on Site C



Plate 14. HWI3263 on Site C



Plate 15. HWI3271 on Site C



Plate 16. HWI3295 on Site C



Plate 17. HWI3290 on Site D



Plate 18. HWI3324 on Site D



Plate 19. HWI3326 on Site D



Plate 20. HWI3333 on Site D



Plate 21. HWI3334 on Site D



Plate 22. HWI3575 on Site D



Plate 23. HWI3337 on Site E



Plate 24. HWI3340 on Site E



Plate 25. HWI3350 on Site E



Plate 26. HWI3352 on Site E



Plate 27. HWI3353 on Site E



Plate 28. HWI3354 on Site E



Plate 29. HWI3355 on Site E



Plate 30. HWI4396 on Site E



Plate 31. HWI4397 on Site E